



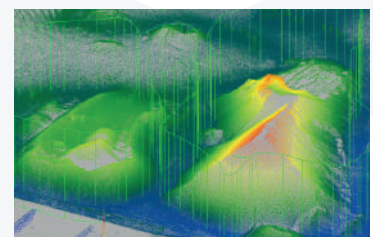
# GeoSLAM Volumes

## Overview

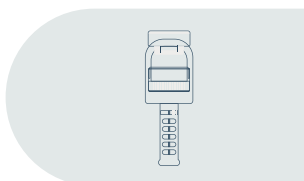
**With GeoSLAM Volumes, mine operators can calculate stockpile tonnage within a few minutes, and monitor change over time, quickly and easily.**

Handheld laser scanners can determine accurate stockpile volumes, silo reserves or mining tempos, without the need for GPS. Walk and scan, or attach the scanner to a trolley, drone, pole, UAV or vehicle for remote monitoring of hazardous environments. GeoSLAM's volumes software instantly turns data into actionable 3D information for rapid real-time decision making.

Confidently verify volumes at all stages of the supply chain as frequently as needed, train staff in minutes, slash survey times and drive down costs.



## How It Works?



### Capture

Easily walk around the perimeter or fly a UAV over a stockpile



### Process

Automatically process the data using GeoSLAM Connect, and load the data to GeoSLAM's Volumes software



### View

Define the boundaries, floor, enter the bulk factor and specific gravity to view volume



### Manage

Generate volumes reports as and when you need them